



Royal Palm Beach Rotary Club Newsletter

April 28, 2016

NEWS

Contribute to the newsletter! Committee news, club news, member news, and photographs are welcome. Please send submissions to Taiye Sangoyomi (taiye@yahoo.com)



RPB President Bruce Elkind with Lynn Balch

Speaker from the April 21 meeting was Lynn Balch, a charter member of the Rotary Club. Lynn made a presentation about himself. Lynn grew up in Pennsylvania, and had his degree in Journalism from Penn State. He has been in the financial services industry since 1984, and is currently with the Legend Group of Palm Beach Gardens, which focuses primarily on the retirement planning needs of the K-12 educational market. In addition to telling us about himself, he provided an overview of Social Security and expressed his opinion on how it could be fixed.

Inside this issue:

News.....	1
Feature News	1
Speaker Schedule.....	2
Last Meeting Recap....	2
Club Member Statistics.	3
Club Leaders.....	4
Meeting Information..	4
Contact Information..	4

Feature News:

Every three years, Rotarians meet at the Council on Legislation to review and vote on proposed legislation. They met this year from April 10-15, 2016. The Council gives us a voice in how our organization is governed.

Key Outcomes From the 2016 Council of Legislation

by Arnold Grahl, *Rotary News*, 18-Apr-2016

The 2016 Council on Legislation may well be remembered as one of the most progressive in Rotary history.

Not only did this Council grant clubs more freedom in determining their meeting schedule and membership, it also approved an increase in per capi-

ta dues of \$4 a year for three years. The increase will be used to enhance Rotary's website, improve online tools, and add programs and services to help clubs increase membership.

continued on page 2

Future Speakers/Program

Date	Speaker
28-Apr-2016	Club Business Meeting
5-May-2016	Marvin Hubert, Fire Safety Specialist

Recap from April 21, 2016 meeting by Bruce Elkind

1. Tax freedom Day...Now you get to keep more of your money for the rest of the year!
2. April is Oral Cancer awareness month...and Rotary's Maternal & Child Health Month
3. Dues invoices have gone out again...please pay!
4. Joan won the Ball Drop...She deserves it!
5. Check out our Club Website...Dr. B is in the member spotlight
6. Dr. B reports that we will exceed \$6000 in Foundation giving Real Soon!
7. Look for these upcoming projects:
Josh the Otter
Crystal Apple Awards
8. Our Candidates are attending RYLA...we will have them speak to the club in the future to share their experiences
9. Lack of applicants may affect giving out scholarships this year
10. LOOKING FOR HOST FAMILIES for next years Exchange Student...need not be a Rotarian Family
11. Don't forget to register for the District Assembly, the District Conference, and our own Installation Banquet
12. Next week is a business meeting
13. BB won the 50/50...you can too...see you at the next meeting
14. Hope, for those who celebrate it, you had a Happy Passover!

Key Outcome From the 2016 Council of Legislation continued from page 1

The Council is an essential element of Rotary's governance. Every three years, members from around the world gather in Chicago to consider proposed changes to the policies that govern the organization and its member clubs. Measures that are adopted take effect 1 July.

The tone for this year was set early, when the RI Board put forth two proposals that increase flexibility. The first measure allows clubs to decide to vary their meeting times, whether to meet online or in person, and when to cancel a meeting, as long as they meet at least twice a month. The second allows clubs flexibility in choosing their membership rules and requirements. Both passed.

Representatives also approved removing six membership criteria from the RI Constitution and replacing them with a simple require-

ment that a member be a person of good character who has a good reputation in their business or community and is willing to serve the community.

The \$4 per year dues increase was based on a five-year financial forecast that predicted that if Rotary didn't either raise dues or make drastic cuts, its reserves would dip below mandated levels by 2020. The yearly per capita dues that clubs pay to RI will be \$60 in 2017-18, \$64 in 2018-19, and \$68 in 2019-20. The next council will establish the rate after that.

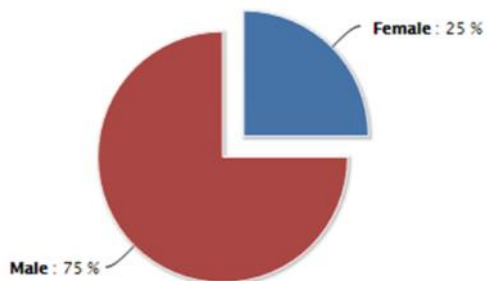
"We are at a moment in time when we must think beyond the status quo," said RI Vice President Greg E. Podd. "We must think about our future."

continued on page 4

Club Member Statistics as of April 2016

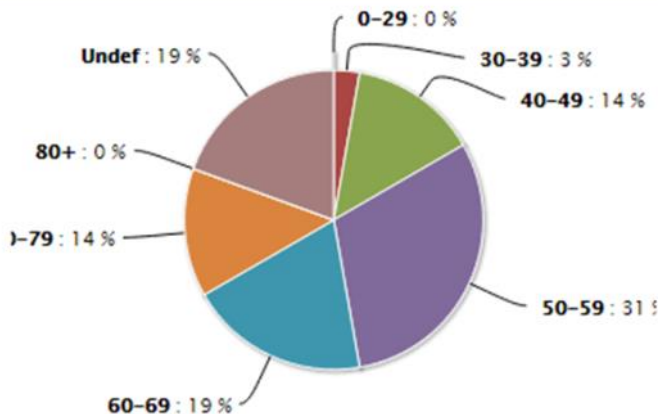
Member Gender

Female:	9
Male:	27
Total:	36



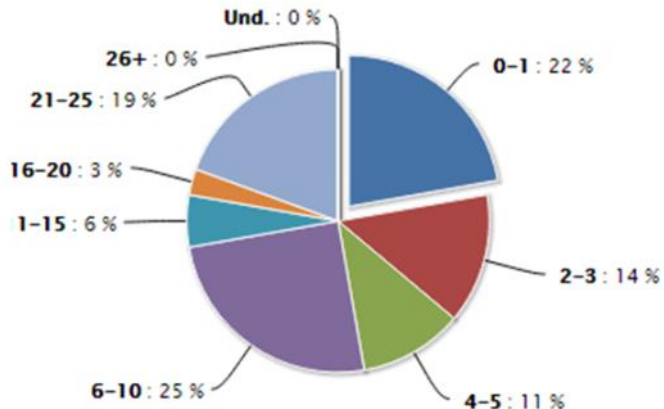
Member Age

0 - 29:	0
30 - 39:	1
40 - 49:	5
50 - 59:	11
60 - 69:	7
70 - 79:	5
80+:	0
Und.:	7
Total:	36



Years of Service

0 - 1:	8
2 - 3:	5
4 - 5:	4
6 - 10:	9
11 - 15:	2
16 - 20:	1
21 - 25:	7
26+:	0
Und.:	0
Total:	36



Key Outcome From the 2016 Council of Legislation continued from page 2

Podd said the dues increase will allow RI to improve My Rotary, develop resources so clubs can offer a better membership experience, simplify club and district reporting, improve website access for Rotaractors, and update systems to keep Rotary in compliance with changing global regulations.

Also because of this Council's decisions:

A Council on Resolutions will meet annually online to consider resolutions — recommendations to the RI Board. Council members will be selected for three-year terms. They'll participate in the Council on Resolutions for three years and the Council on Legislation in their final year only. The Council on Resolutions will free the Council on Legislation to concentrate on enactments — changes to Rotary's governing documents. Proponents predict that the Council on Legislation can then be shortened by a day, saving \$300,000.

Rotaractors will be allowed to become members of Rotary clubs while they are still in Rotaract. Proponents argued that too few

Rotaractors (around 5 percent) join Rotary. Sometimes it's because they don't want to leave their Rotaract clubs before they have to, upon reaching age 30. It's hoped that giving them more options will boost the numbers of qualified young leaders in Rotary.

The distinction between e-clubs and traditional clubs will be eliminated. The Council recognized that clubs have been meeting in a number of ways, and given this flexibility, the distinction was no longer meaningful. Clubs that have "e-club" in their names can keep it, however.

The reference to admission fees will be removed from the bylaws. Proponents argued that the mention of admission fees does not advance a modern image of Rotary.

A standing committee on membership was established, in recognition that membership is a top priority of the organization, and polio eradication was also reaffirmed to be a goal of the highest order.

Royal Palm Beach Rotary Club Leaders

President	Elkind, Bruce Lee
President-Elect & Program Chair	Logan, Steven Mark
Vice President	Jordano, Keith
Secretary	Scherer, Joan
Sergeant-at-Arms	Sangoyomi, Taiye
Club RI Foundation Chair	Bhandary, Sharada Ram

Membership Chair	Snyder, Scott Bernard
Club Service Co-Chair	Balch, Lynn
Club Service Chair	Fehribach, Michael
Webmaster	Tomchin, Ronald E.
Youth Services Chair	Hmara, Jeff
iPast President	Smith, Diane

Meeting Information

Location:

Wild West Diner, 12041 Southern Blvd., Loxahatchee, FL 33470

Date & Time:

Thursdays, 7:30 AM - 8:30 AM

Contact Information

Joan Scherer

Phone: 561-422-8890

Email: j-schere@comcast.net